

A SHIP DESIGNED TO DEPART  
FROM THE EXPECTED.

Celebrity

EDGE<sup>SM</sup>

Celebrity **X** Cruises<sup>®</sup>

SAIL BEYOND BORDERS





## A SEA CHANGE IN THE ART OF RELAXATION

### Introducing The Spa on *Celebrity Edge*

Whether guests want to clear their mind, fine-tune their body, reinvigorate their spirit, or all of the above, The Spa on *Celebrity Edge* is a 13,907-square-foot escape. Its design rivals any of the leading spas in the world. Its technological innovations take “me time” boldly into the future. And its groundbreaking industry firsts offer guests advanced ways to look and feel their best on vacation. But the most revolutionary secret of The Spa is the simplest thing of all – nature.

Celebrity Cruises infused nature into every moment of the experience at The Spa through an original concept called SEA - inspired by the **sea**, **earth**, and the **air**. From the bespoke blended essences wafting through the air to therapies and treatments harnessing naturally soothing and restorative properties, SEA is the foundation for a wellness journey like no other. It's everything guests should expect on a ship designed to create a greater connection between themselves, the sea, and the breathtaking world beyond.






## DESIGNING A LUXURIOUS SANCTUARY FOR THE MODERN TRAVELER

To create an environment that was both in harmony with nature and undeniably opulent, world-renowned designer Kelly Hoppen, MBE, used warm and neutral tones, rich textures, and natural materials. The result is an atmosphere that soothes the soul and envelops guests in luxury from the minute they enter The Spa.

In addition to The Spa, Hoppen brings her deceptively simple, warm, harmonious design sense to the accommodations, The Retreat, and Luminae at The Retreat.







# The Spa on *Celebrity Edge* introduces an array of ahh-inspiring firsts

Celebrity's first SEA Thermal Suite, an evolution of the brand's popular Persian Garden, featuring eight distinctive therapeutic experiences harnessing sea, earth, and air

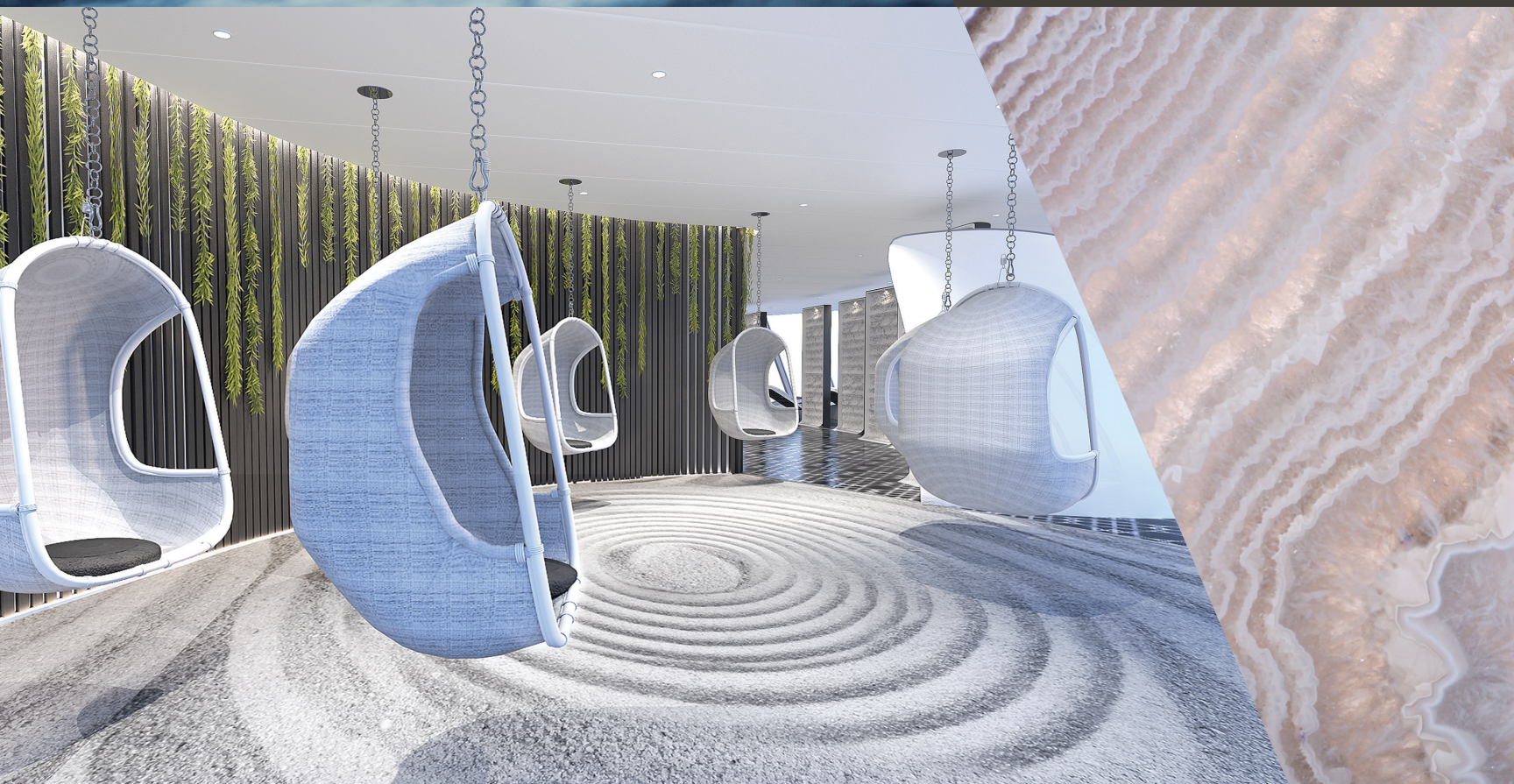
Celebrity's first collection of ELEMIS BIOTEC facials

A specialty table collection that's unrivaled at sea, including the first MLW Amphibia table on a ship and the first WellMassage 4D table and MLX Quartz table in the Celebrity fleet

The first Ideal Image Ocean, The Advanced MedSpa, at sea

The first ever Kérastase Institute at sea, one of the few salons in the world to receive this designation

Even more Celebrity firsts in The Fitness Center, including hot yoga, Technogym Group Cycle, cardio boxing, and the first Bungee Fit ever offered at sea.







## Total relaxation—by the numbers

*13,907 total square feet*

*124 SEA treatments available, including SEA-inspired therapies*

*15 services from Ideal Image® Ocean, The Advanced MedSpa*

*31 dedicated spa therapists*

*23 treatment rooms, including 1 couples suite*

*3 high-tech treatment tables*







## SEA Thermal Suite

At the heart of The Spa on *Celebrity Edge* is the SEA Thermal Suite, a playground for the senses where connecting with fellow spa-goers is as central to the experience as time alone to focus on oneself. AquaClass guests will enjoy complimentary access to the SEA Thermal Suite and its eight distinct spaces.



# Eight distinct experiences One incredible place to relax

Combining the elements of water and earth, the 104-square-foot **Hammam** is Celebrity's modern take on the traditional Turkish bath, decked out in sleek marble and gorgeous mosaic tiles. This quiet retreat invites guests to loosen muscles with a body polish and soak that will leave guests glowing and relaxed.

Sit down, relax, and take a deep healing breath in the **Salt Room**. The elements of water, earth, and air are all present in this 115-square-foot simulated salt cave environment that's believed to help treat a variety of respiratory and skin conditions.

Guests can soothe their senses in the 90-square-foot **Steam Room**, where the elements of water and air mingle. The moist heat is believed to open up the airways, and toxins seem to melt away from the body as guests sweat.

What's more renewing than a spring shower? Step into the **Rainfall Water Therapy Room** pre- or post-treatment, where the element of water takes center stage in this 256-square-foot space. Simulated rain showers—ranging from warm to cool, from light drops to a waterfall—massage the body, invigorate the soul, and wash away any worries.

Feel lighter than air, the central element in the **Float Room**, as guests swing into a meditative sleep, cocooned in floating basket chairs. Floor-to-ceiling windows wrap this 320-square-foot venue, offer stunning views of the sea, keeping guests connected to the water as they reach new heights of restfulness.

Right next to the floating chairs and offering the same panoramic views are the 11 **heated tile loungers**, making this space the perfect zen zone to relax after treatments.

In the 222-square-foot **Infrared Sauna**, the air is heated to calm the body and relieve stress, releasing feel-good endorphins. The infrared lighting system offers many of the benefits of natural sunlight without the damaging effects.

Earth is the element that drives the luminous **Crystalarium**, where a crystal serves as the conduit for natural healing energy, and gentle warmth exudes from the natural stone walls of this 91-square-foot room.



## A truly spa-inspired vacation from the massage table to the dining table

When guests stay in the signature AquaClass staterooms, guests will not only enjoy unlimited access to the SEA Thermal Suite but also complimentary dining in the exclusive Blu restaurant, a personal spa concierge, and soothing touches throughout their stateroom, from aromatherapy diffusers to pillow menus.

**Total Square Footage:** 2,885 sq. ft.

**Guest Capacity:** 126 (plus 22 outdoor)





# Therapies and spa treatments

Guests can choose from a number of enticing options inspired by nature's most rejuvenating elements, each one ending with the mellow tones of sound therapy. Celebrity's therapies and signature treatments include the Salt Stone Therapy, ELEMIS Thousand Flower Detox Wrap, and Thai Herbal Poultice Massage – just to name a few. Treatments combine the restorative natural elements of sea, earth, and air with the most state-of-the-art technology available.







## The future of “me time” has arrived

### ELEMIS BIOTEC facials

Celebrity is also thrilled to offer its first collection of ELEMIS BIOTEC facials, which use the latest and most advanced facial technology to help increase guest's skin's natural cellular energy. Oxygen, light therapy, and galvanic stimuli switch the skin back “on.” Choose from eight groundbreaking BIOTEC skin therapies focused on anti-aging, skin pigmentation and brightening, and regular care and maintenance.

### MLW Amphibia table

*Celebrity Edge* is the first ship ever to feature this water-filled treatment table that adapts to guests' unique anatomy for the ultimate in comfort. Color therapy lighting customizes the experience and sets the mood as guests settle in for an Aroma Spa Seaweed Massage.

### WellMassage 4D table

Introducing a first in the Celebrity fleet, this award-winning treatment table uses breakthrough technology to deliver a deeper and more relaxing massage. Surrender to a feeling of weightlessness while enjoying the seamlessly choreographed Zero Gravity Immersion Massage.

### MLX Quartz table

Another first in the Celebrity fleet, this unique treatment table features warm crystals that mold and shape around a guest's body, helping to release muscle tension and promote a deeper state of relaxation. Lie down for a Hot Mineral Body Boost or Poultice-Powered Muscle Release.



# ELEMIS Retail Therapy

Guests can continue the experience at The Spa even after they return home – with the same luxurious ELEMIS products Celebrity uses in the SEA-inspired therapies and spa treatments on board. The interactive ELEMIS Ingredient Wall will show guests the advanced science and natural ingredients behind Celebrity's luxurious line of ELEMIS products and give guests expert recommendations.





# Ideal Image Ocean, The Advanced MedSpa

When it came to offering unrivaled cosmetic treatments on *Celebrity Edge*, Celebrity Cruises turned to the leading experts in the field. Introducing Ideal Image Ocean, The Advanced MedSpa – a first at sea.

Ideal Image Ocean, The Advanced MedSpa, will feature Dysport Wrinkle Treatments, Restylane Dermal Filler Treatments, and Thermage CPT. Celebrity is also proud to offer CoolSculpting, a non-surgical fat-reduction procedure – with little to no downtime.







# Kérastase Institute

Celebrity Cruises will be partnering with Kérastase, one of the world's most advanced luxury haircare brands, to create the ultimate salon experience at The Spa. Not only will this be the first Kérastase Institute at sea, but it's one of the few salons in the world to receive this designation. Using advanced technology, the experts at the Kérastase Institute can diagnose individual haircare needs and prescribe personalized treatment options for guests.

And of course, guests will find everything they'd expect from a full-service salon – manicures, pedicures, and more.

**KÉRASTASE**  
PARIS





## THE BARBER

Celebrity Cruises knows that today's modern luxury man wants to look impeccable down to every detail. That's why the brand created The Barber at The Spa. Kelly Hoppen's use of warm tones and rich natural materials create a perfectly inviting space for a sleek cut and a fresh shave.







## The Fitness Center

The Fitness Center on *Celebrity Edge* will have guests looking for any excuse to work out. The latest, state-of-the-art Technogym weight machines and cardio equipment will challenge guests to take their fitness game to the next level. With floor-to-ceiling windows that keep them connected to the sea at all times, guests couldn't ask for more refreshing views as they work up a sweat in the 7,398-square-foot space. And, if they're looking for a little more motivation or to try some of the hottest trends in fitness today, the brand is also introducing new classes and programs never before seen on Celebrity.





## Fitness firsts

### Hot Yoga

A first on board Celebrity, this restorative form of yoga uses a heated environment and variety of props both to stimulate and relax the mind and body.

### RYDE

The next evolution in indoor cycling classes, RYDE, powered by Technogym, ups the thrill factor by giving guests a real road-cycling sensation and surrounding them in an immersive, inspirational atmosphere that's sure to get their adrenaline and endorphins flowing.

### Pulse Barre

Challenge oneself to the max and discover why barre is considered one of the fastest, most effective total body workouts one can do. Balance is the key to this high-intensity, low-impact workout.







## Fitness On Demand

The first Fitness on Demand program in the Celebrity fleet puts more than 1,200 pulse-pounding workouts instantly at guests' fingertips, all led by expert instructors and perfect for individual or small group workouts.

## The Contender

A Celebrity first, this cardio boxing class will knock guests out (in a good way). Increase stamina and strength together in one exhilarating workout.



# the spa cafe + juice bar

Refuel after workouts and spa treatments with something fresh and flavorful from The Spa Café and Juice Bar. Guests will love Celebrity's creative take on healthy cuisine, from nourishing salads to nutritious smoothies and cold-pressed juices.

**Total Square Footage:** 1,034 sq. ft.  
**Guest Capacity:** 40





# FOR MEDIA INQUIRIES

Please visit [www.celebritycruisespresscenter.com](http://www.celebritycruisespresscenter.com) for any materials needed, such as images, video, logos, ship fact sheets, additional leadership bios, etc.

Journalists are also encouraged to sign up for Celebrity's press center mailing list to receive to-the-minute updates and more exciting news from the brand.

## CONTACT US

The Celebrity Cruises Public Relations team can be contacted at the below:

### **Katherine Hill**

Director, Global Public Relations  
Celebrity Cruises  
[katherinehill@celebrity.com](mailto:katherinehill@celebrity.com)  
(305) 539-6127

### **Alessandra Carriero**

Account Supervisor  
DeVries Global  
[acarriero@devriesglobal.com](mailto:acarriero@devriesglobal.com)  
(212) 546-8515

### **Nathalie Alberto**

Manager, Public Relations  
Celebrity Cruises  
[nalberto@celebrity.com](mailto:nalberto@celebrity.com)  
(305) 539-6721

### **Sean Layton**

Account Supervisor  
DeVries Global  
[slayton@devriesglobal.com](mailto:slayton@devriesglobal.com)  
(212) 546-8556

### **Adora English**

Consultant, Public Relations  
Celebrity Cruises  
[aenglish@celebrity.com](mailto:aenglish@celebrity.com)  
(305) 539-5386

### **Michala Oestereich**

Account Coordinator  
DeVries Global  
[moestereich@devriesglobal.com](mailto:moestereich@devriesglobal.com)  
(212) 546-8586

### **Bradley Norman**

Specialist, Public Relations  
Celebrity Cruises  
[bradleynorman@celebrity.com](mailto:bradleynorman@celebrity.com)  
(305) 539-4413

### **Judith HoSang**

Vice President  
DeVries Global  
[jhosang@devriesglobal.com](mailto:jhosang@devriesglobal.com)  
(212) 546-8654

## FOLLOW US

Facebook – [Celebrity Cruises](#)  
Twitter – [@celebritycruise](#)  
Instagram – [@celebritycruises](#)  
YouTube – [Celebrity Cruises](#)