

EXPLORE THE WORLD  
WITHOUT LEAVING YOUR TABLE.

Celebrity

# EDGE<sup>SM</sup>

CULINARY



# World-class restaurants that open your world.

Celebrity Cruises delivers a diverse and authentic culinary journey on board by turning the focus to the destinations the brand visits. Here, Celebrity finds creative inspiration and the local ingredients for the visionary recipes the brand's Michelin-starred chef, Cornelius Gallagher, creates.





# Celebrity Cruises' Culinary Guiding Principles

- Top culinary talent.
- Globally inspired recipes.
- Locally sourced ingredients.
- Fresh preparation daily.

The best dining experience at sea—period.



29

*Total Restaurants, Cafés,  
Bars, & Lounges*

4

*Main Dining  
Restaurants*

2

*Exclusive Suite Class &  
AquaClass Restaurants*

7

*New Specialty  
Restaurants*

5

*Complimentary  
Dining Venues*

11

*Bars & Lounges*





# Main Dining Experience

Celebrity Cruises' goal to open up the world through the unique culinary experiences the brand provides comes to life on *Celebrity Edge*. Celebrity redesigned the main dining experience to include not one but four complimentary main restaurants, each with a distinctive design and ambience inspired by a specific region of the world.



# Traditional Dining

Celebrity Cruises will continue to offer guests Traditional Dining, which means they can choose either early seating (6:00 PM) or late seating (8:30 PM). With this options, guests can book the same restaurant, the same table, and the same waiter each night.



# Celebrity Select Dining Plus

Now that guests have four main restaurants to choose from, Celebrity Cruises renamed its Celebrity Select Dining program Celebrity Select Dining Plus. This option allows guests to dine when and where they'd like each evening; they can make reservations in any of the four restaurants.







# COSMOPOLITAN RESTAURANT

Celebrity Cruises knows its current main dining experience across the brand's fleet is one of the reasons guests sail Celebrity time and time again. To maintain the essence of that experience on *Celebrity Edge*, the brand created the Cosmopolitan Restaurant – the next evolution of the current main restaurants. The walk-through wine display at the entrance sets the scene for the cuisine guests will enjoy here: New American with global influences. With exclusive menus, guests will discover favorite dishes prepared in exciting ways that make them brand-new favorites again.

## FAST FACTS/FEATURES

**Total Square Footage:** 7,385 sq. ft.

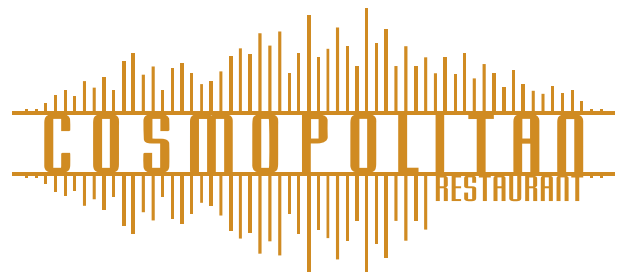
**Seating Capacity:** 346 Guests

**Attire:** Smart Casual

**Pricing:** Complimentary

**Hours of Operation:**

- Breakfast (Port): 7:30 – 9:00 A.M.
- Breakfast (At Sea): 8:00 – 9:30 A.M.
- Lunch (Port): N/A
- Lunch (At Sea): 12:00 – 1:30 P.M.
- Dinner: 6:00 – 9:30 P.M.







# TUSCAN RESTAURANT

Step inside and discover the delicious ambience of a modern classical design inspired by Italian fashion and film. Guests will savor mouthwatering cuisine inspired by authentic Italian eateries, featuring all homemade pastas prepared with a rustic flare. Guests' taste buds will get a tour of Italy without even stepping ashore.

## FAST FACTS/FEATURES

**Total Square Footage:** 6,997 sq. ft.

**Seating Capacity:** 344 Guests

**Attire:** Smart Casual

**Pricing:** Complimentary

### Hours of Operation:

- Breakfast (Port): N/A
- Breakfast (At Sea): N/A
- Lunch (Port): N/A
- Lunch (At Sea): N/A.
- Dinner: 6:00 – 9:30 P.M.







# CYPRUS RESTAURANT

Dear to Celebrity Cruises' heart, this restaurant represents the brand's Greek heritage. Celebrity wanted to create a stunning atmosphere that would represent the Mediterranean fare served here, so the brand worked with world-renowned designer Patricia Urquiola. In Cyprus, the menu's main focus is seafood and features simple, clean dishes that celebrate the food and beverages of the Mediterranean region.

## FAST FACTS/FEATURES

**Total Square Footage:** 7,180 sq. ft.

**Seating Capacity:** 342 Guests

**Attire:** Smart Casual

**Pricing:** Complimentary

### Hours of Operation:

- Breakfast (Port): 7:30 – 9:00 A.M.
- Breakfast (At Sea): 8:00 – 9:30 A.M.
- Lunch (Port): N/A
- Lunch (At Sea): 12:00 – 1:30 P.M.
- Dinner: 6:00 – 9:30 P.M.







# NORMANDIE RESTAURANT

With ties to Celebrity Cruises' elegant Murano specialty restaurant on many of the brand's ships, and a nostalgic nod to *Celebrity Summit* (wooden panels from the ship are incorporated into the design), Normandie Restaurant features contemporary French cuisine in a modern, upscale, refined atmosphere that evokes the romance of springtime in Paris, with a color palette reminiscent of cherry blossoms in full bloom. Guests can enjoy regional European wines, deliciously uniquely cocktails, tantalizing starters, and mouthwatering entrées.

## FAST FACTS/FEATURES

**Total Square Footage:** 6,566 sq. ft.

**Seating Capacity:** 346 Guests

**Attire:** Smart Casual

**Pricing:** Complimentary

### Hours of Operation:

- Breakfast (Port): N/A
- Breakfast (At Sea): N/A
- Lunch (Port): N/A
- Lunch (At Sea): N/A.
- Dinner: 6:00 – 9:30 P.M.







# LUMINAE AT THE RETREAT

Dining on *Celebrity Edge* is an exclusive affair for Suite Class guests with access to a private restaurant, Luminae at The Retreat, the highest-rated restaurant in the Celebrity Cruises fleet. Luminae is sumptuously designed by Kelly Hoppen and features menus that change daily and are not available in any other restaurant on board.

## FAST FACTS/FEATURES

**Total Square Footage:** 4,312 sq. ft.

**Seating Capacity:** 172 Guests

**Attire:** Smart Casual

**Pricing:** Complimentary and Exclusive for Suite Class guests

**Hours of Operation:**

- Breakfast (Port): 7:30 – 9:00 A.M.
- Breakfast (At Sea): 8:00 – 9:30 A.M.
- Lunch (Port): N/A
- Lunch (At Sea): 12:00 – 1:30 P.M.
- Dinner: 6:00 – 9:30 P.M.



l u m i n a e

---

at the retreat





# BLU

AquaClass guests will enjoy exclusive access to Blu, featuring clean, crisp flavors and inventive cuisine complemented by an extensive list of sustainable and biodynamic wines. Everything here is undeniably delicious. Pair all of that with personalized service, inviting surroundings, and natural light, and guests have the fresh and bold experience of Blu.

## FAST FACTS/FEATURES

**Total Square Footage:** 2,885 sq. ft.

**Seating Capacity:** 126 Guests (plus 22 outdoor)

**Attire:** Smart Casual

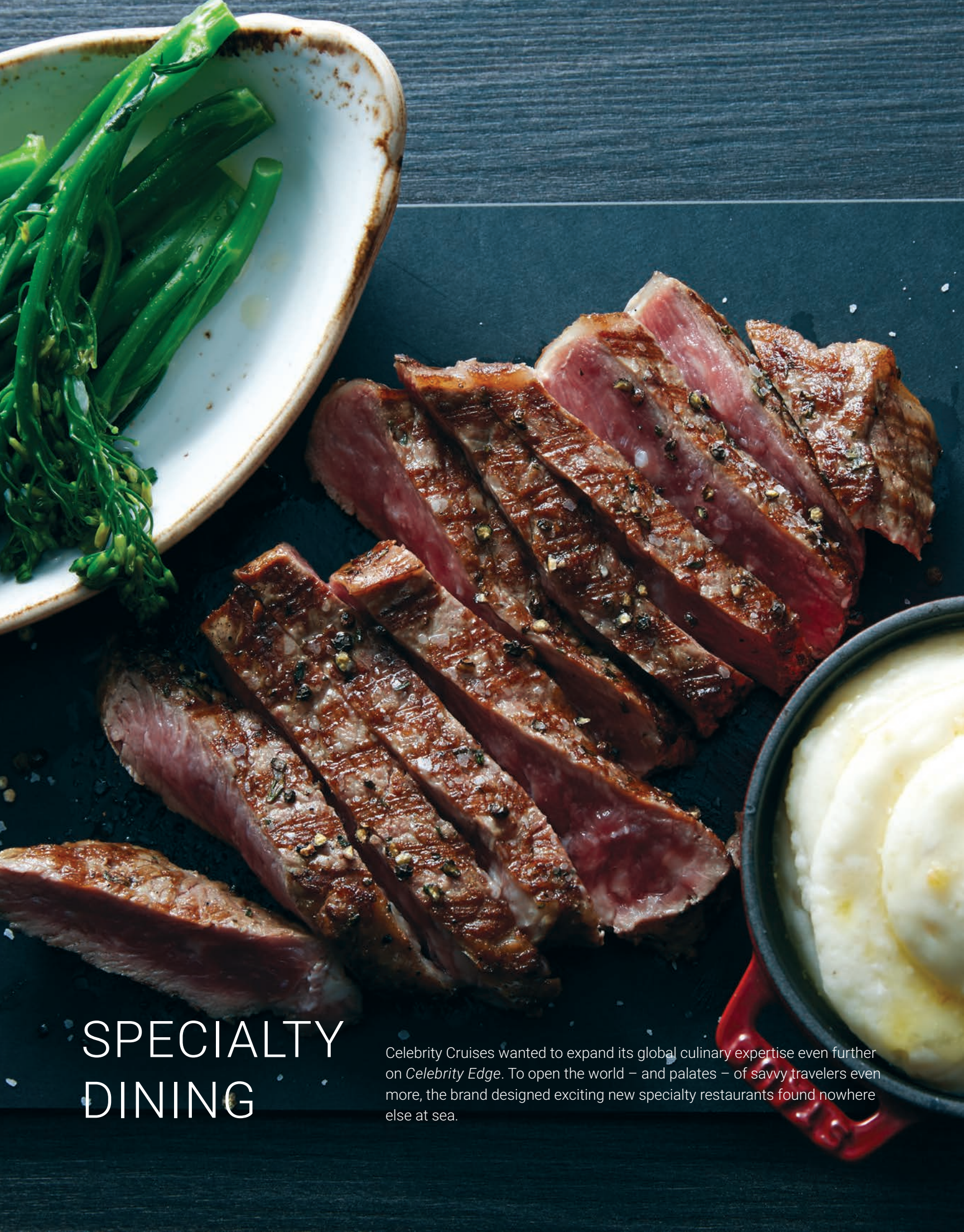
**Pricing:** Complimentary and Exclusive for AquaClass guests

### Hours of Operation:

- Breakfast (Port): 7:30 – 9:00 A.M.
- Breakfast (At Sea): 8:00 – 9:30 A.M.
- Lunch (Port): N/A
- Lunch (At Sea): N/A
- Dinner: 6:00 – 9:30 P.M.







# SPECIALTY DINING

Celebrity Cruises wanted to expand its global culinary expertise even further on *Celebrity Edge*. To open the world – and palates – of savvy travelers even more, the brand designed exciting new specialty restaurants found nowhere else at sea.





# FINE CUT STEAKHOUSE

Discover this upscale dining experience for dinner with service that's elevated to an art form and a space that's warm and inviting with a glamorous palette of rich ruby, amber, and gold design elements. While the design creates an ambience of sophistication, the cuisine offers up the sizzle—literally. With a wide selection of the choicest cuts of meat to the freshest premium seafood, there's something here for everyone.

## FAST FACTS/FEATURES

**Total Square Footage:** 3,165 sq. ft.

**Seating Capacity:** 88 Guests (plus 32 outdoor)

**Attire:** Smart Casual

**Pricing:** \$55 (Dinner)

**Hours of Operation:**

- Breakfast (Port): N/A
- Breakfast (At Sea): N/A
- Lunch (Port): N/A
- Lunch (At Sea): N/A
- Dinner: 6:00 – 10:00 P.M.

**FINE CUT**  
S T E A K H O U S E





# LE GRAND BISTRO

Inspired by classic French bistros, the mouthwatering sights, scents, and sounds of a bustling boulangerie-pâtisserie will excite guests almost as much as the food itself. The ambience changes from morning to evening, and the venue offers seating options that range from the planter-edged sidewalk to the inner café with stunning views of the sea. So, every time guests eat here, it's a whole new experience.

## FAST FACTS/FEATURES

**Total Square Footage:** 2,260 sq. ft.

**Seating Capacity:** 90 Guests

**Attire:** Casual

**Pricing:** \$10 (Breakfast), \$20 (Lunch), \$25 (Dinner)

### Hours of Operation:

- Breakfast (Port): 7:30 – 10:00 A.M.
- Breakfast (At Sea): 8:00 – 9:30 A.M.
- Lunch (Port): N/A
- Lunch (At Sea): 12:00 – 1:30 P.M.
- Dinner: 6:00 – 10:00 P.M.







# TABLEMATION STUDIOS

Using innovative technology created by Skullmapping and presented by TableMation Studios, Celebrity Cruises is bringing the tabletop to life in Le Grand Bistro with Le Petit Chef – an animated character who appears beside guests' plate and prepares each course they'll be enjoying right in front of them before they're served the actual dish. It's an immersive, mind-blowing fusion of entertainment and dining like nothing guests have ever experienced before.







## RAW ON 5

Using both raw and refined elements with earth tones, pearlescent accents, and natural textures, Celebrity Cruises created a sophisticated yet approachable restaurant.

The dramatic raw bar display at the entrance showcases an abundance of oysters, crab, and lobsters to choose from. The menu, also available at the Magic Carpet when positioned on deck 5, will feature more casual offerings like Shrimp Salad, our signature Lobster Roll and sushi and sashimi prepared by our expert sushi chefs.

### FAST FACTS/FEATURES

**Total Square Footage:** 1,720 sq. ft.

**Seating Capacity:** 60 Guests

**Attire:** Smart Casual

**Pricing:** À la carte

**Hours of Operation:**

- Breakfast (Port): N/A
- Breakfast (At Sea): N/A
- Lunch (Port): N/A
- Lunch (At Sea): 12:00 – 1:30 P.M.
- Dinner: 6:00 – 10:00 P.M.

RAW ON 5





# MAGIC CARPET

When on Deck 5, Magic Carpet is an open-air extension of Raw on 5. Here guests will find an airy, casual seafood restaurant offering select Raw on 5 favorites as well as its own unique menu. When these two restaurants meet, it's the perfect pairing for an unforgettable al fresco dining experience as guests glide over the glistening water below.

## FAST FACTS/FEATURES

**Total Square Footage:** 1,830 sq. ft.

**Seating Capacity:** 79 Guests

**Attire:** Casual

**Pricing:** À la carte

**Hours of Operation:**

- Breakfast (Port): N/A
- Breakfast (At Sea): N/A
- Lunch (Port): N/A
- Lunch (At Sea): N/A
- Dinner: 6:00 – 10:00 P.M.







# ROOFTOP GARDEN GRILL

Whether enjoying lunch or dining under the stars, the Rooftop Garden Grill is nestled perfectly in its own delicious corner of the Rooftop Garden. Discover the ultimate in outdoor eateries where while surrounded by the open sky and the most incredible ocean views, while savoring gourmet backyard BBQ favorites.

## FAST FACTS/FEATURES

**Total Square Footage:** 1,530 sq. ft.

**Seating Capacity:** 64 Guests

**Attire:** Casual

**Pricing:** \$25 (Lunch), \$45 (Dinner)

### Hours of Operation:

- Breakfast (Port): N/A
- Breakfast (At Sea): N/A
- Lunch (Port): N/A
- Lunch (At Sea): 12:00 – 1:30 P.M.
- Dinner: 6:00 – 10:00 P.M.

ROOFTOP  
GARDEN GRILL





# EDEN RESTAURANT

Enter a place where dining is taken to new and exciting places. Eden restaurant features a lively, open air kitchen and menus that deliver sensory and experiential dishes served by performance artists known as Edenists. Here, guests will let their inhibitions go and set their senses free with innovatively mouthwatering specialties inspired by nature.

## FAST FACTS/FEATURES

**Total Square Footage:** 3,660 sq. ft.

**Seating Capacity:** 100 Guests

**Attire:** Casual

**Pricing:** \$65 (Dinner)

**Hours of Operation:**

- Breakfast (Port): N/A
- Breakfast (At Sea): N/A
- Lunch (Port): N/A
- Lunch (At Sea): N/A.
- Dinner: 6:00 – 10:00 P.M.





# COMPLIMENTARY DINING

Celebrity Cruises has expanded the dining opportunities in main dining with four new restaurants, and now the brand has extended the complimentary dining selection across *Celebrity Edge* as well. From the new Eden Café to the popular Oceanview Café and Mast Grill, there's every opportunity for guests to please their palate morning, noon, and night.



The Spa Café and Juice Bar

GRAND PLAZA CAFÉ  
EDEN CAFÉ  
OCEANVIEW CAFÉ  
THE SPA CAFÉ AND JUICE BAR  
MAST GRILL





# BARS & LOUNGES

There's so much to say about the new dining experiences aboard *Celebrity Edge*, but Celebrity Cruises hasn't forgotten some of the tried-and-true popular favorites, including Café al Bacio, the Pool Bar, the Casino Bar, the Theater Bar, and the ever-popular Sunset Bar. They're all here, waiting to serve up hand-crafted cocktails and ice cold craft brews or healthy snacks guests need to replenish after a day exploring the world or relaxing by the pool.



## BARS

THE MARTINI BAR

EDEN BAR

THE RETREAT POOL BAR

SUNSET BAR

THE POOL BAR

IL SECONDO BACIO

THE CASINO BAR

THE THEATER BAR

## LOUNGES

THE RETREAT LOUNGE

CAFÉ AL BACIO

THE CLUB







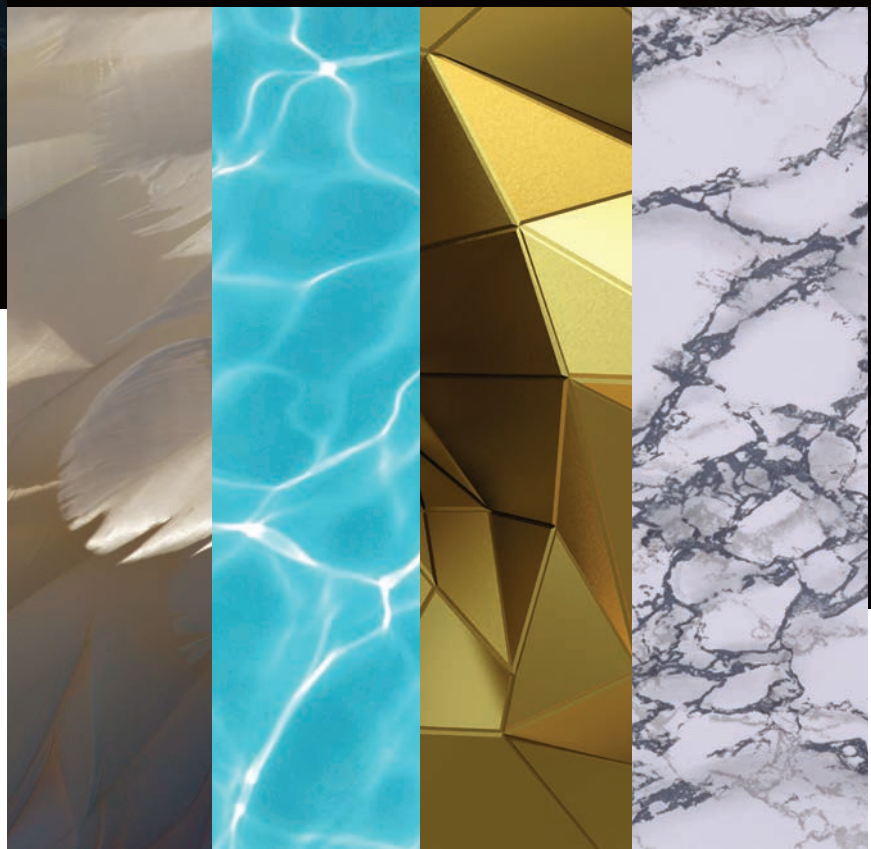
*"Celebrity is committed to delivering the very best in luxury design. Their attention to the overall experience, the level of detail and care, that is what really stood out for me. I love the idea that we can travel beautifully, and that every moment of the experience—from start to finish—is exceptional. That's what Celebrity Edge is all about."*

*—Nate Berkus*

## NATE BERKUS

### EDGE TRAVEL AMBASSADOR

As part of an exclusive partnership, design icon Nate Berkus was brought on board as the Travel Ambassador for Celebrity Cruises' newest class of ships. With his global aesthetic, forward-thinking style, and distinctive personality, Nate is the perfect fit to showcase Celebrity's cutting-edge innovation as the brand curates the ultimate travel experience.





# A REVOLUTIONARY DESIGN TEAM

Celebrity Cruises carefully selected a team of the world's best designers based on their portfolios as well as their inexperience with cruise ships and cruising. That's right. The brand sought out designers who were new to the cruise industry, because Celebrity wanted to ensure every aspect of *Celebrity Edge* would be a departure from traditional thinking about cruising. Celebrity wanted a team that would bring a completely fresh perspective to ship design—and the brand got exactly that with a team of world-renowned designers, including Patricia Urquiola and Kelly Hoppen, MBE. Plus, Celebrity partnered with Nate Berkus who joined the family as the Edge Travel Ambassador.



**PATRICIA URQUIOLA**  
ARCHITECT/DESIGNER

Patricia studied architecture at the world-renowned Madrid Polytechnic and Milan Polytechnic. Her talents have earned her a long list of international honors and awards, and many of her designs are displayed in some of the most prestigious museums in the world. She created the stunning interior of one of Celebrity Cruises' new main dining venues—Cyprus Restaurant.



**KELLY HOPPEN, MBE**  
INTERIOR DESIGNER

International designer Kelly Hoppen brings her deceptively simple, warm, harmonious design sense into the Suite Class exclusive restaurant—Luminae at The Retreat. When asked what drew her to the project, Hoppen says, "It was exciting to explore the precise balance between the excitement of travel and the comfort of a luxurious personal space."



# THE REVOLUTIONARY NEW SHIP SETS SAIL NOVEMBER 2018



## THE CARIBBEAN

With an incredible ship designed to highlight the destinations, Celebrity Cruises decided to start in the corner of the world so often referred to as “paradise” – the Caribbean islands. *Celebrity Edge* offers two sundrenched itineraries from Fort Lauderdale. The minute guests set sail, they’ll feel completely connected to the islands – and every shimmering nautical mile of sea that between them. *Celebrity Edge* begins island hopping through the Caribbean this November.



## THE MEDITERRANEAN

After *Celebrity Edge*’s debut in the Caribbean, Celebrity Cruises decided to take her to the stunning vistas of the Mediterranean. The brand designed dynamic itineraries to complement this incredibly dynamic ship. Escape on sailings ranging from seven to 11 nights from London, Barcelona, and Rome and visit the south of France, the Greek Isles, Italy, Spain – cities every world traveler should have on their bucket lists



# FOR MEDIA INQUIRIES

Please visit [www.celebritycruisespresscenter.com](http://www.celebritycruisespresscenter.com) for any materials needed, such as images, video, logos, ship fact sheets, additional leadership bios, etc.

Journalists are also encouraged to sign up for Celebrity's press center mailing list to receive to-the-minute updates and more exciting news from the brand.

## CONTACT US

The Celebrity Cruises Public Relations team can be contacted at the below:

### **Katherine Hill**

Director, Global Public Relations  
Celebrity Cruises  
[katherinehill@celebrity.com](mailto:katherinehill@celebrity.com)  
(305) 539-6127

### **Nathalie Alberto**

Manager, Public Relations  
Celebrity Cruises  
[nalberto@celebrity.com](mailto:nalberto@celebrity.com)  
(305) 539-6721

### **Adora English**

Consultant, Public Relations  
Celebrity Cruises  
[aenglish@celebrity.com](mailto:aenglish@celebrity.com)  
(305) 539-5386

### **Bradley Norman**

Specialist, Public Relations  
Celebrity Cruises  
[bradleynorman@celebrity.com](mailto:bradleynorman@celebrity.com)  
(305) 539-4413

### **Judith HoSang**

Vice President  
DeVries Global  
[jhosang@devriesglobal.com](mailto:jhosang@devriesglobal.com)  
(212) 546-8654

### **Alessandra Carriero**

Account Supervisor  
DeVries Global  
[acarriero@devriesglobal.com](mailto:acarriero@devriesglobal.com)  
(212) 546-8515

### **Sean Layton**

Account Supervisor  
DeVries Global  
[slayton@devriesglobal.com](mailto:slayton@devriesglobal.com)  
(212) 546-8556

### **Jessica Russo**

Account Executive  
DeVries Global  
[jrusso@devriesglobal.com](mailto:jrusso@devriesglobal.com)  
(212) 546-8622

### **Simone Brownlee**

Account Coordinator  
DeVries Global  
[sbrownlee@devriesglobal.com](mailto:sbrownlee@devriesglobal.com)  
(212) 546-8553

## FOLLOW US

Facebook – [Celebrity Cruises](#)  
Twitter – [@celebritycruise](#)  
Instagram – [@celebritycruises](#)  
YouTube – [Celebrity Cruises](#)



